

A large, stylized yellow DNA double helix graphic is centered on the page. It consists of two vertical yellow lines representing the sugar-phosphate backbones, connected by three horizontal yellow bars representing the nitrogenous base pairs. The helix is oriented vertically, with the top and bottom loops open.

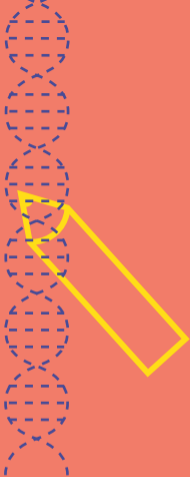
**DEVINETTES
GÉNÉTIQUEMENT
MODIFIÉES**



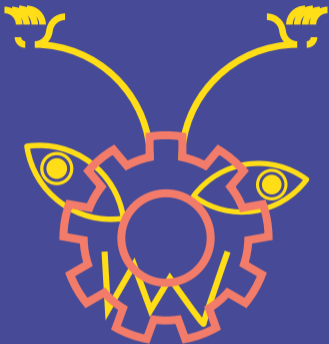
ADN



ARN



BIOLOGIE SYNTHÉTIQUE
BIOLOGIE DE SYNTHÈSE



BIOTECHNOLOGIES



CERTIFICAT D'OBTENTION VÉGÉTALE (COV)

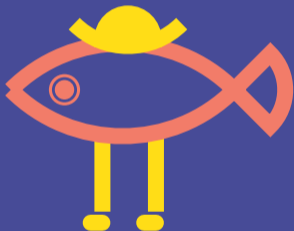


CISGENÈSE



CRISPR-CAS9

(Clustered regularly interspaced short palindromic repeats-Cas9)



CROISEMENT



ENZYME



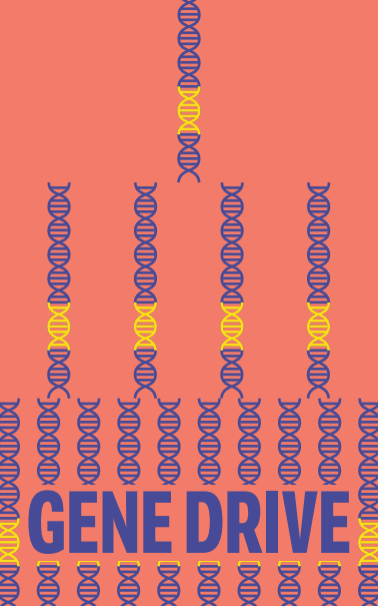
ENZYME DE RESTRICTION



GÈNE



GÉNIE GÉNÉTIQUE



GENE DRIVE



GÉNOME



HYBRIDATION



LIGNÉE HYBRIDE



MUTAGENÈSE DIRIGÉE



**ORGANISME
GÉNÉTIQUEMENT MODIFIÉ**



TRANSGÈNE



TRANSGENÈSE



TRANSGÉNIQUE